

SERVING UP A NEW LEVEL OF PERFORMANCE

A stylish look, with smarter features



- Contemporary two tone colours
- Customisable dual pad and 6.5" colour touch screen
- Enhanced easy-to-use application software
- Flexible configuration system

UP-800 Series

It looks the part, and does the business.

With its sleek lines and two-tone grey casing, the new UP-800 will grace the most upmarket restaurant, hospitality or retail environment.

Yet its real beauty is far more than skin deep, for this is EPoS that's been designed and built specifically to meet the most demanding requirements of fast-moving business sectors.

It even brings a new way of working, with dual pad and touch screen operation.

Altogether, it's a high quality management tool that combines outstanding performance in the key areas of efficiency, reliability and flexibility.

To all this, you can add other benefits that include dependability, expandability and enhanced application software features that come from an extremely stable operating platform.

The new UP-800 is easy-to-use, and equally easy to maintain – with lead through menus to guide you in each programming step.

And, for all its eye-catching good looks, it's more than robust enough to shrug off the heavy handed treatment which is an inevitable fact of life.

With the UP-800 Series, you have the culmination of years of experience that has made Sharp one of the leading and most respected names in EPoS technology.

Customisable keyboard, for greater convenience

The UP-800 versatility is demonstrated by a flat keyboard that can be customised to suit your specific business requirements. What's more, it has the ability to switch back and forth between PLU menus – and price levels which is ideal for restaurants where menus and prices change at different times of the day.

A clearly better TFT Colour LCD Display Touch Panel

Clearly readable and operator-friendly, the 6.5 inch backlit colour display can show as many as eight lines of information on-screen, letting operators quickly verify sales items, prices and other data.

The bright display can even be read in subdued lighting, and the screen is tiltable for optimal viewing. To make item selection and data correction easier than ever, the touch screen accommodates up to 15 customisable keys.

Complete control through In-Line Communication

With an Ethernet interface board as standard, the UP-800 Series terminal becomes a master for an in-house network of centrally linked satellite terminals.

This high speed in-line system enables master to satellite transmission of preset data – and also allows sales data from all satellite terminals to be sent to the master. In turn, this brings significant time savings through automatic totalling.

The UP-800 Series also has a unique printer routing feature which allows a flexible system configuration between UP-800F (non printer) and UP-810F (printer integral) models.

Optional MCR to stay on track

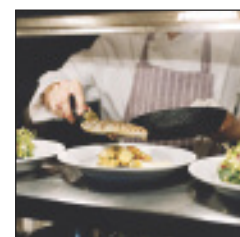
The UP-800 Series can be equipped with an optional Magnetic Card Reader. This will let you easily keep track of employee and customer activity, so you can plan more effectively.

SD Card Slot records the regulars

An SD Card Slot is standard on the UP-800 Series and this function enables data to be backed up easily.

Contactless Operator Key. Eliminates wear, eliminates risk

This key needs no electrical connection, and works without being inserted into the UP-800, so wear and tear is eliminated. ID codes for individual operators are encrypted using 64-bit data for the highest degree of security.



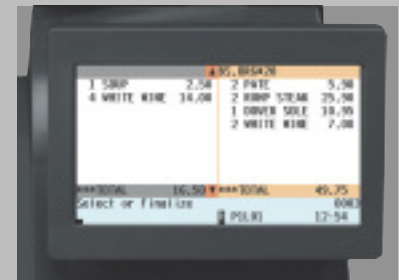


TFT Colour LCD Display with Touch Panel



For ease of use, common tasks can be assigned as auto keys

Bill Separation



Simple and intuitive bill separation screen

PLU Menu

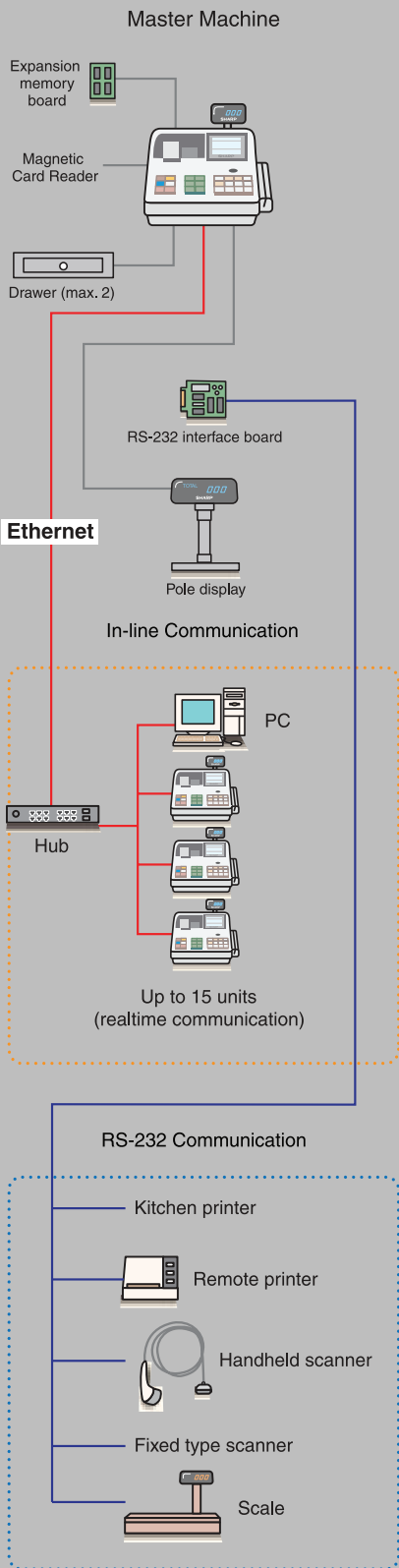


Easy to organise and view by PLU groups

- ✓ Large LED customer display
- ✓ RS-232 interface ports – max. 4 ports
- ✓ High capacity cash drawer
- ✓ 9 exchange and conversion rates
- ✓ Auto key function
- ✓ Price shift function
- ✓ Recall GLU (guest look-up) function
- ✓ Menu/condiment/combo PLUs
- ✓ Comprehensive promotional menus
- ✓ Flash reporting
- ✓ Bonus points feature
- ✓ Bill separation by item/amount/number of people
- ✓ PLU information text for recipes/wine tasting notes



UP-800 Series



Dealer stamp



Specifications

Display	Operator	6.5 inch TFT colour touch screen LCD with backlight, tilt mechanism
	Customer	Large 7-digit, 7 segment LED
Keyboard	Type	Flat (UP-800F/810F/820F)
	No. of keys	Standard 144 keys (UP-800F/810F)
Printer	Type	1-station thermal (UP-810F)
	Digits	48 Digits (UP-810F)
	Paper Width	80 mm (UP-810F)
Memory Card		1 SD Card Slot
In-Line Network		Max 16 terminals
	Type	TCP/IP
RS-232 Communication		Standard 4-port 2 standard; 2 D-SUB; 9 PIN
Department		Standard 20, Max. 99
No. of PLU		Standard 12,000, (1 price level, stand alone)
		Max. 65,000 (1 price level, stand alone) with UP-SO4MB2
Tax Function		Total 6 rates (VAT or add-on tax)
Dimensions (W x D x H) without drawer		349 x 438 x 261mm
	Dimensions (W x D x H) with drawer	355 x 438 x 381mm (approx.)
Weight with drawer		UP-800F – 13.15 kg (approx.)
Weight with drawer		UP-810F – 14.35 kg (approx.)
Weight without drawer		UP-800F – 6.1 kg
Weight without drawer		UP-810F – 7.3 kg
Power Supply		Official UK (nominal) voltage and frequency 220/240V

UP-800 Option List

Item	Specification
Expansion RAM Board (4MB)	UP-S04MB2
Remote Printer	Epson Compatible
Remote Display	UP-P20DPB
Remote Drawer	ER03DWB4 ER05DWB5*
Magnetic Card Reader	UP-E13MR3
Contactless Clerk Key	UP-R10CL2 (Clerk key reader is included with main unit)

* ER05DWB5 drawer will be included with the machine
 Specifications may be subject to change, without notice. All copyright and trademarks acknowledged.